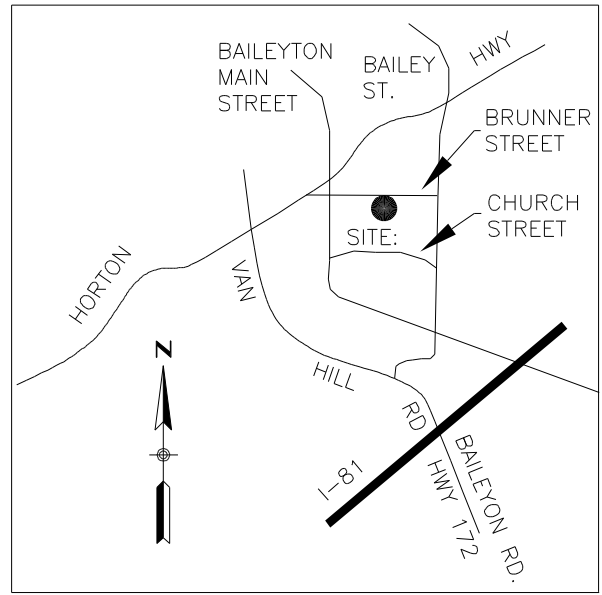


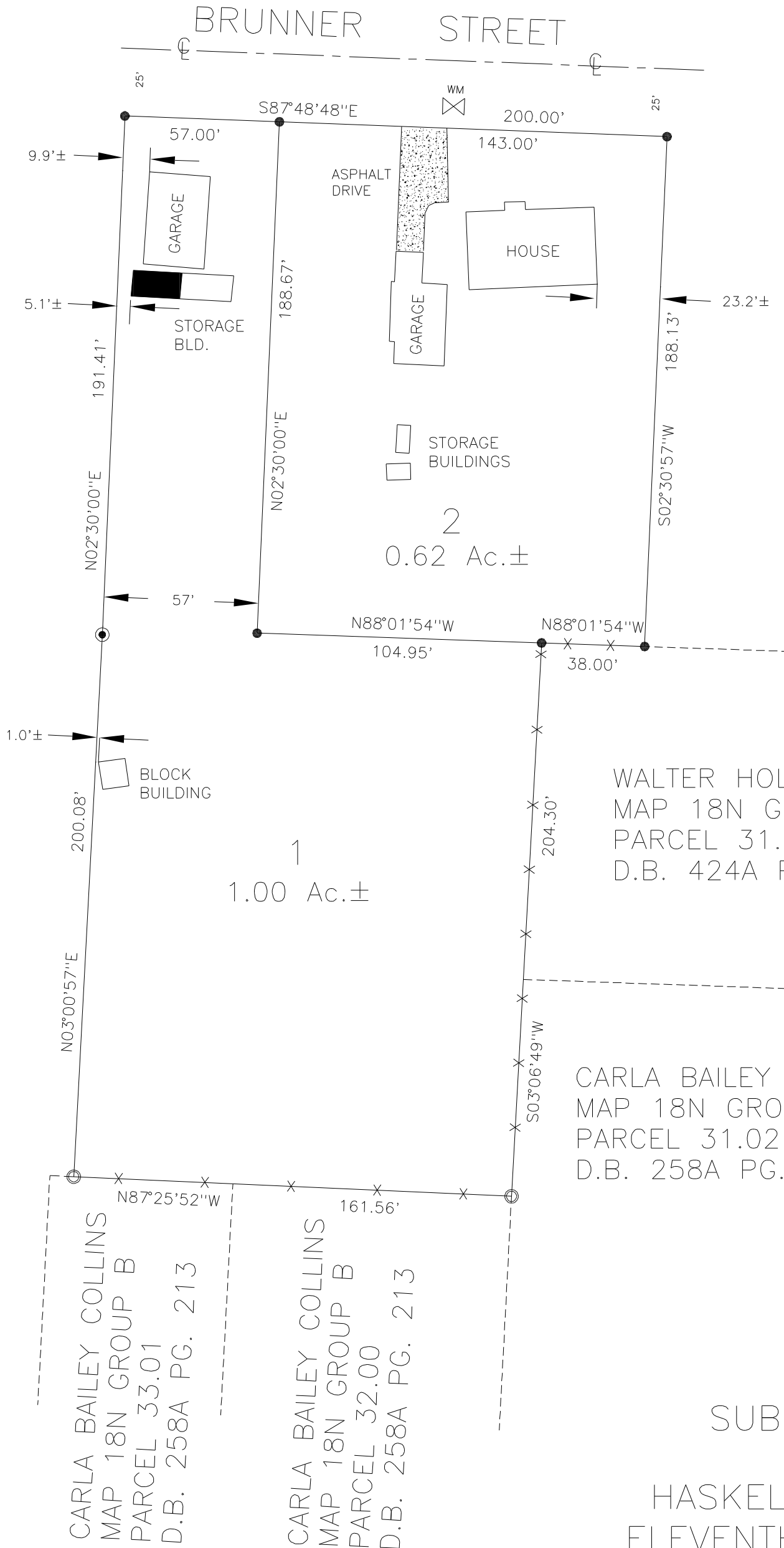
LEGEND

- - IRON PIN FOUND
- - IRON PIN SET
- - 4" DIA. POST



LOCATION MAP
NTS

NEWMAN COOTER, etux
MAP 18N GROUP B PARCEL 25.00
D.B. 186 PG. 256
D.B. 188 PG. 507



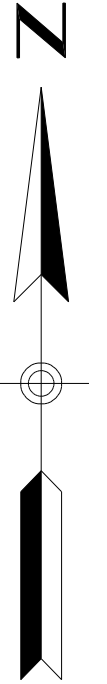
MABLE HUDSON
MAP 18N
GROUP B
PARCEL 27.00
D.B. 62A
PG. 068

WALTER HOLEMAN, JR., etux
MAP 18N GROUP B
PARCEL 31.01
D.B. 424A PG. 986

CARLA BAILEY COLLINS
MAP 18N GROUP B
PARCEL 31.02
D.B. 258A PG. 213

CARLA BAILEY COLLINS
MAP 18N GROUP B
PARCEL 33.01
D.B. 258A PG. 213

CARLA BAILEY COLLINS
MAP 18N GROUP B
PARCEL 32.00
D.B. 258A PG. 213



SUBDIVISION PLAT
OF THE
HASKEL McLAIN ESTATE
ELEVENTH CIVIL DISTRICT
GREENE COUNTY, TENNESSEE